

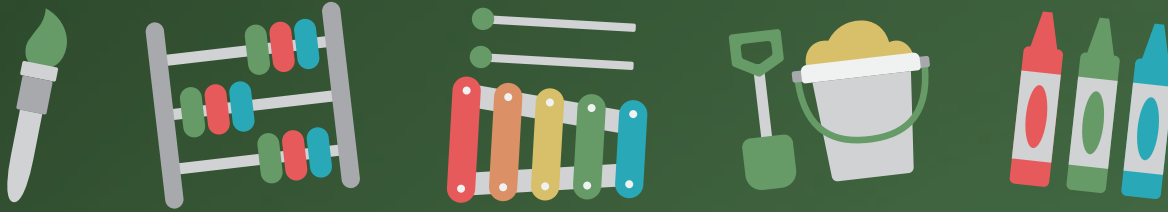


THE EARLY CHILDHOOD STUDENT PROGRAM AND LAB SCHOOL PRESCHOOL PROGRAM



THE EARLY CHILDHOOD STUDENT PROGRAM
Learn more: www.capemaytech.com/cte-childhood.html

PRESCHOOL PROGRAM
Learn more and apply: www.capemaytech.com/lab-school.html
or email labschool@capemaytech.com



EARLY CHILDHOOD DEVELOPMENT CENTER AND LAB SCHOOL PRESCHOOL PROGRAM

The Cape May Technical School District Early Childhood Development Center (ECDC) is designed for high school and adult students pursuing professions in childcare. As part of the program, ECDC students work alongside NJDOE-certified preschool teachers and Early Education high school teachers at the ECDC Lab School Preschool. Preschool students enrolled in either full-day or half-day programs learn from the ECDC students who work toward making lessons fun and exciting. Classes have low student-to-teacher ratio, incorporate lessons that promote growth, and include lots of play time.

The Lab School Preschool Program introduces children to a balance of interaction with friends in both teacher-directed and child-directed experiences. The daily schedule includes a wide range of free choice activities, both large and small group activities, and indoor/outdoor play.

Centers within the classroom include:

**Blocks • Dollhouse Play • Computers • Creative Movement
Language Arts / Pre-Writing • Legos • Math • Sand/Water Play
Science • Sensorial Play • Woodworking • And More!**

OUR PHILOSOPHY

The ECDC Lab School Preschool Program welcomes the children of staff, students, county employees and other Cape May County families who wish to apply. The program is designed to meet the needs of preschool children and their families and serves as an advocate for parents who are a vital asset in promoting the development of their child. Children benefit from a balanced curriculum that encompasses the whole child and learn in a safe, positive, accepting atmosphere, where they feel free to explore and grow. As they're learning, so are our future educators. The ECDC provides the adult students with hands-on experience that they will take into their careers as childcare professionals, an exchange that promotes growth for everyone involved.

Please Note: Children must be 3 years old by October 1 OR 2.5 years old and toilet trained to apply.

Find the Lab School Preschool Program Guide and Application at www.capemaytech.com/lab-school.html. Contact John Longinetti at labschool@capemaytech.com with any questions.

Learn more about The Early Childhood student program at www.capemaytech.com/cte-childhood.html.